



ALOHA AND WELCOME TO THIS **COMIC STRIP**. LINDA AND I CELEBRATED OUR 25TH ANNIVERSARY BY GOING BACK TO OUR FAVORITE ISLAND.

**OUR CONDO**



**OUR VIEW**



# OUR BUILDING



WE COULD PICK  
OUR OWN BANANAS.



WE WERE IN THE MIDDLE OF QUITE  
A BOTANICAL GARDEN.



WE MUST BE IN  
PARADISE.



WE FOUND A GREAT LITTLE RESTAURANT JUST DOWN THE BEACH CALLED "LAVA LAVA," GREAT FOR BREAKFASTS.

# LAVA LAVA



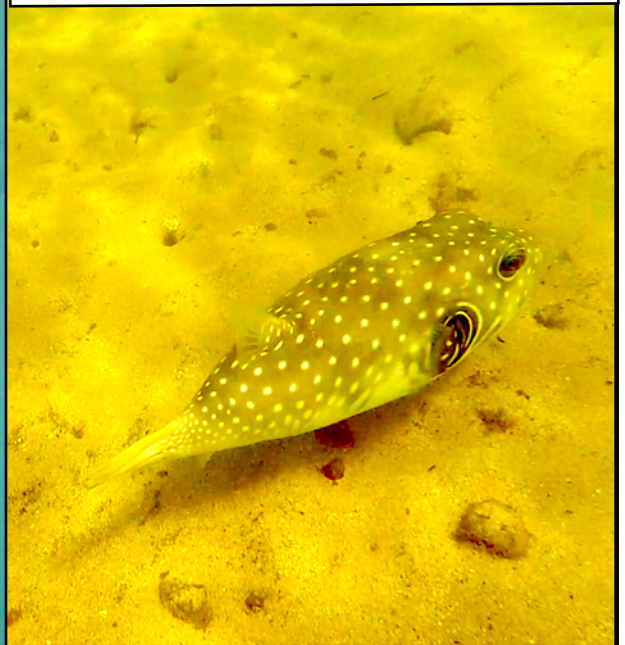
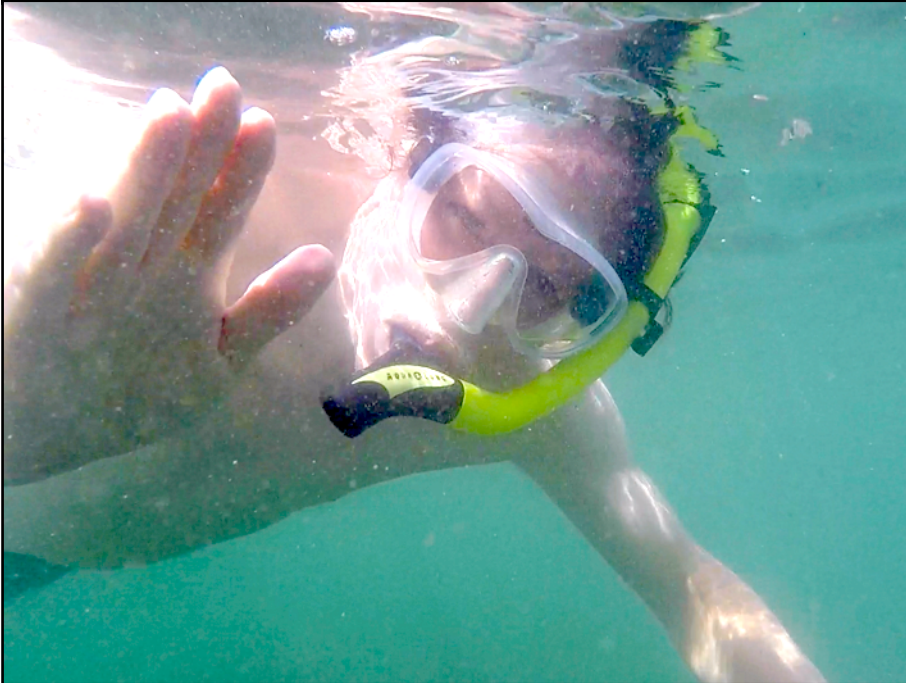
UNCLE JED, THE FERAL CAT WE OFTEN PASSED ON THE WAY TO "LAVA LAVA," SOMEONE FED HIM AND TOOK CARE OF HIM.



# WAILUA FALLS



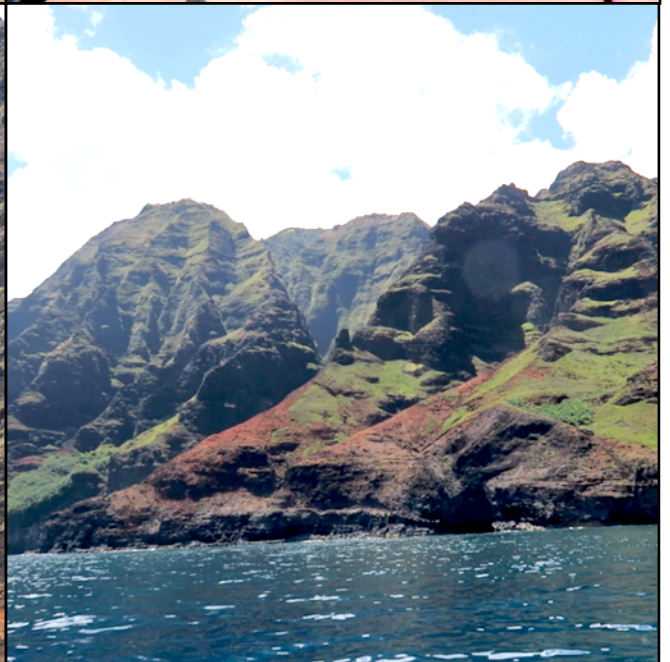
SNORKELING AT LYDGATE BEACH PARK. THE WATER WAS A BIT MURKY.



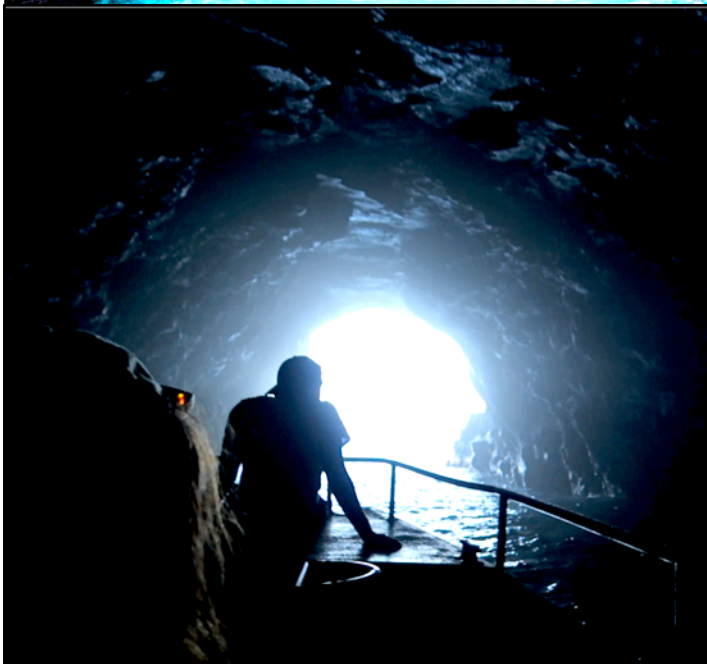
KE ALA HELE MAKALAE (BIKE PATH)



# NA PALI COAST CRUISE



# NA PALI COAST CRUISE



NA PALI COAST SNORKELING

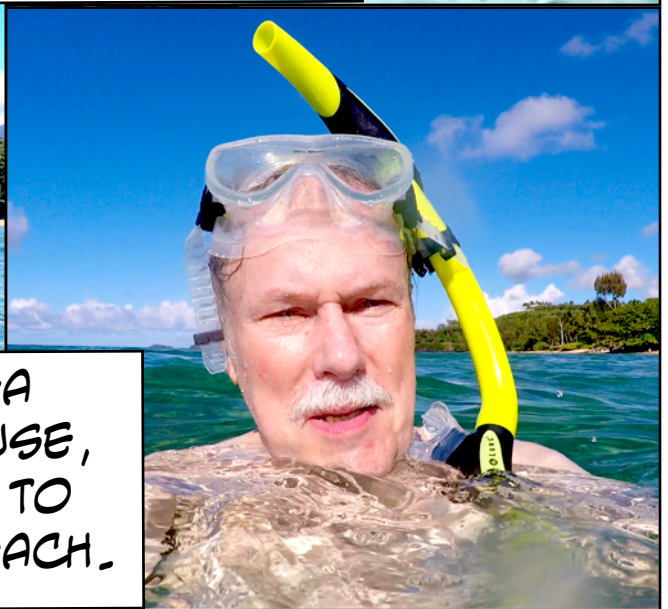




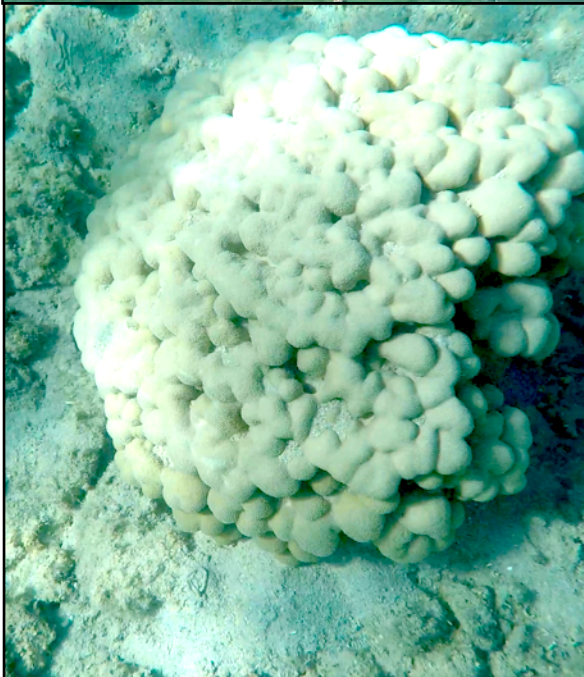
# ANNINI BEACH SNORKELING



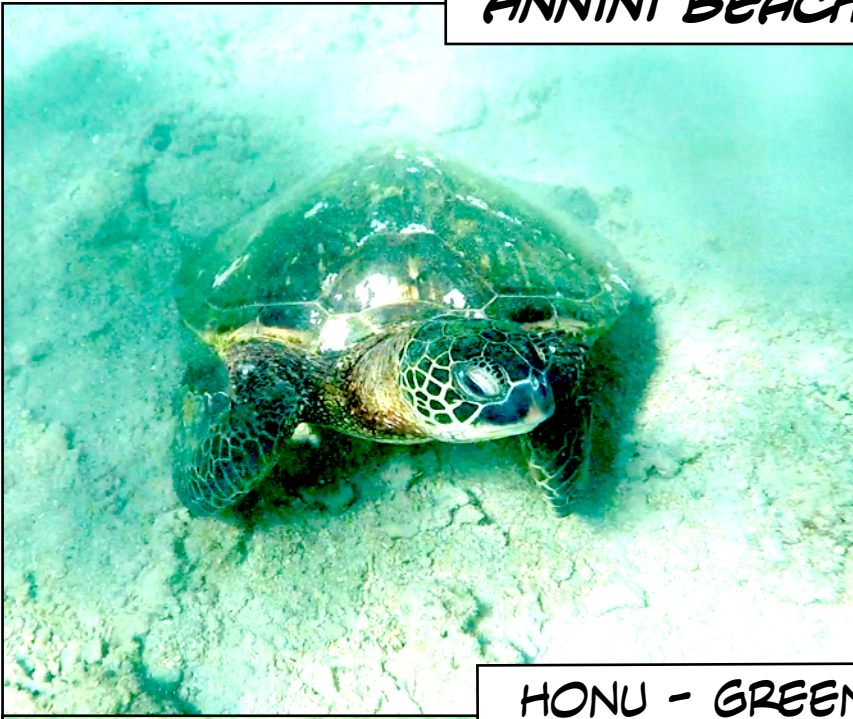
“HUMUHUMUNUKUNUKUAPUA’A”



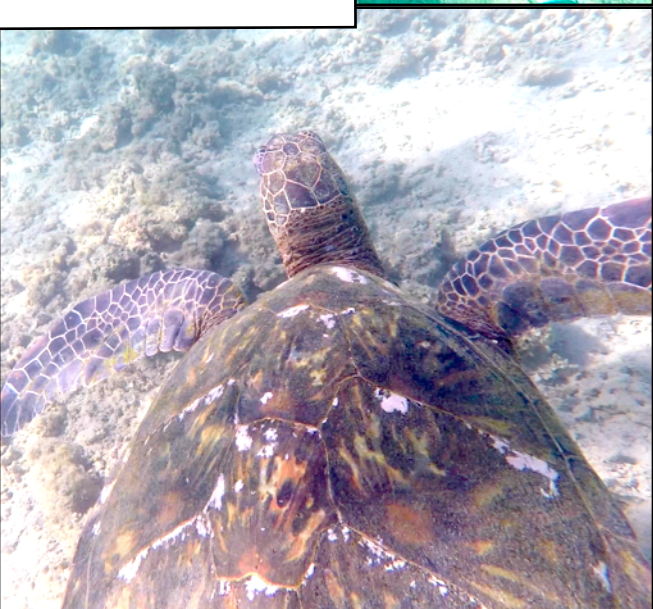
KILAUEA  
LIGHTHOUSE,  
ON WAY TO  
ANNINI BEACH.



**ANNINI BEACH SNORKELING**



**HONU - GREEN SEA TURTLE**



# WAIMEA CANYON



WILD CHICKENS CAN BE SEEN ALL OVER THE ISLAND, EVEN ON TOP OF WAIMEA CANYON.





SHAVE ICE, A SPECIAL HAWAIIAN TREAT.



AT SPOUTING HORN.



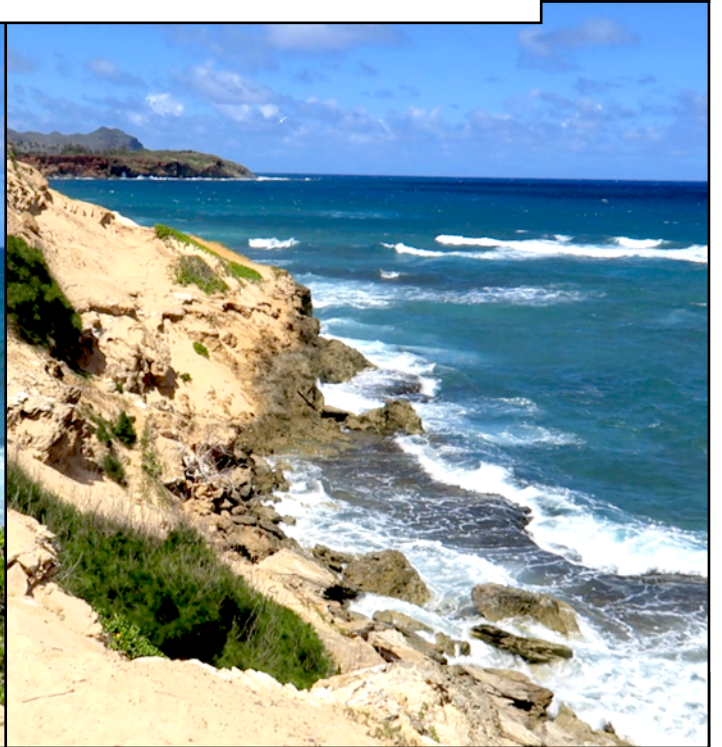
WHEN YOU DRIVE TO THE POIPU AREA, YOU GO THROUGH THIS "TUNNEL OF TREES."

# MAHU'ULEPU HERITAGE TRAIL

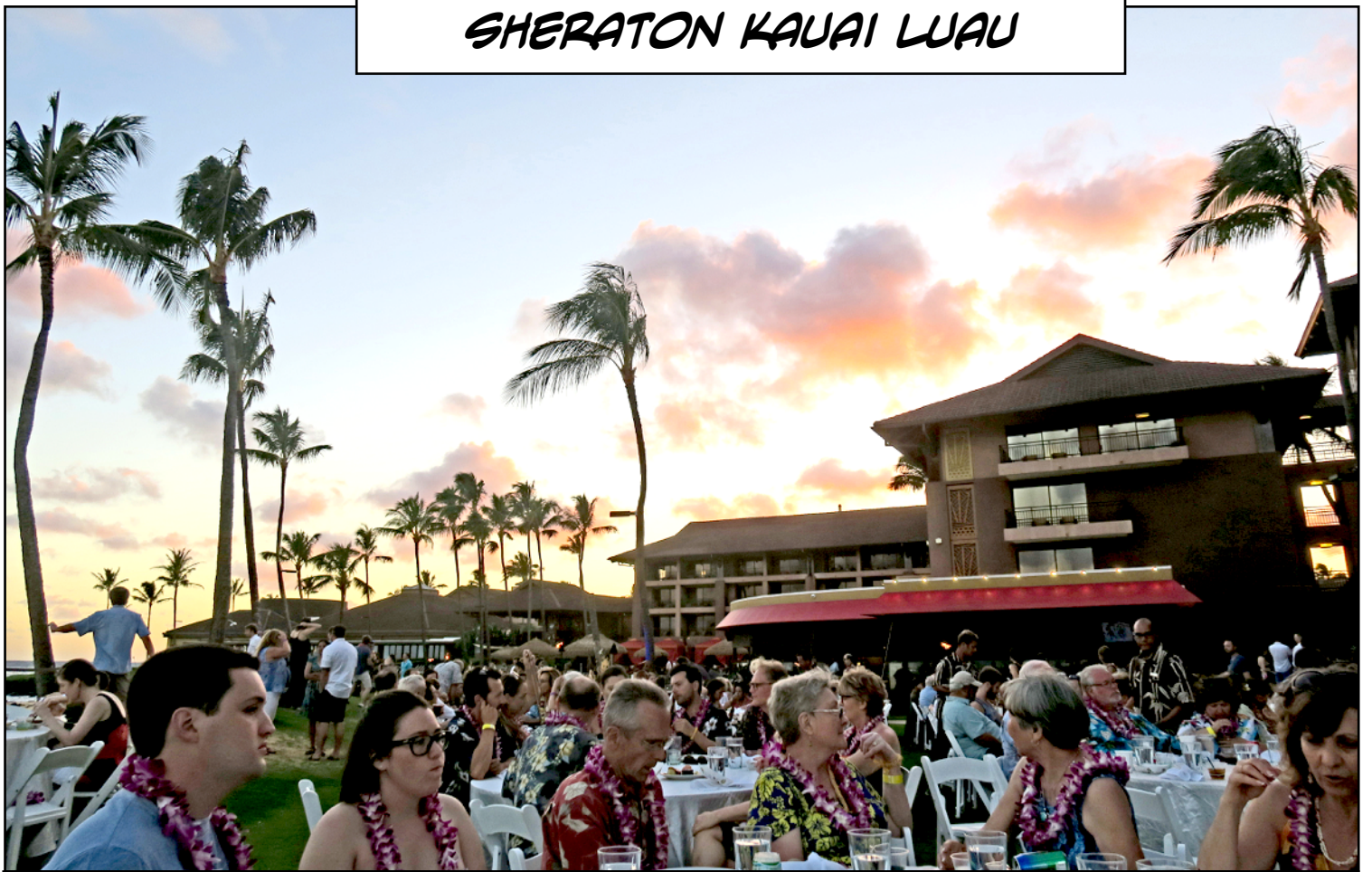




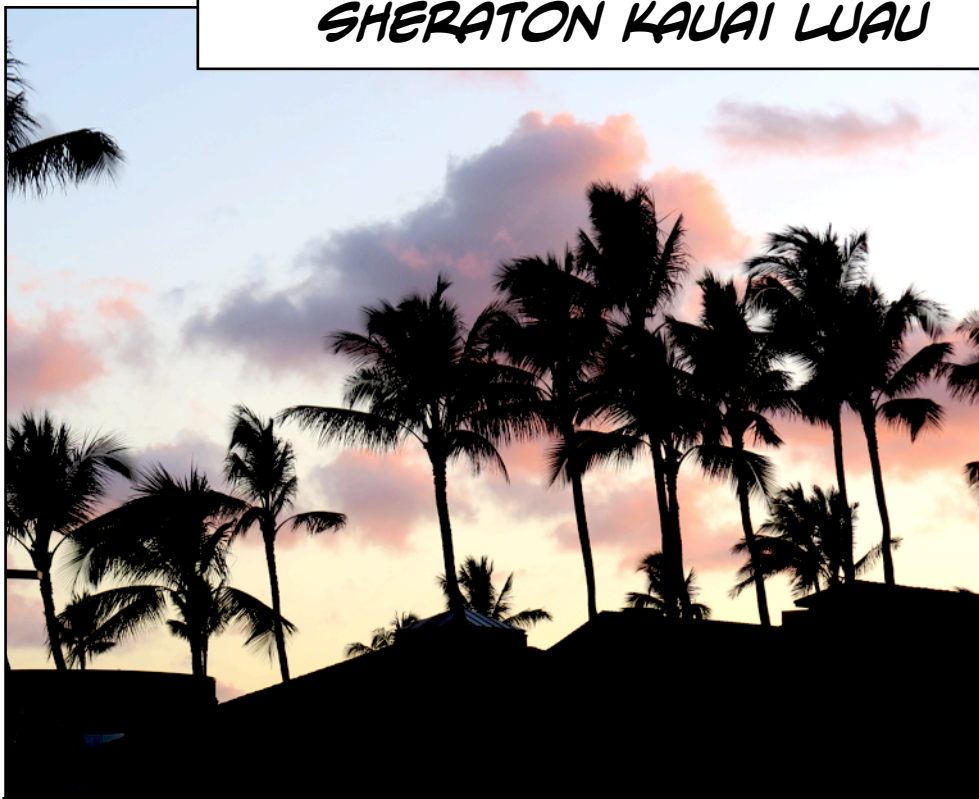
**MAHU'ULEPU HERITAGE TRAIL**



# SHERATON KAUAI LUAU



# SHERATON KAUAI LU'AU





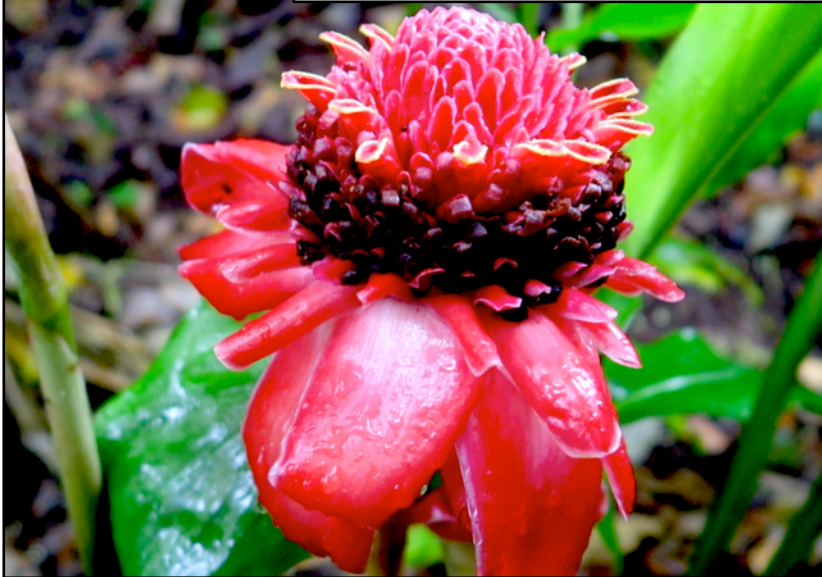
# SHERATON KAUAI LUAU



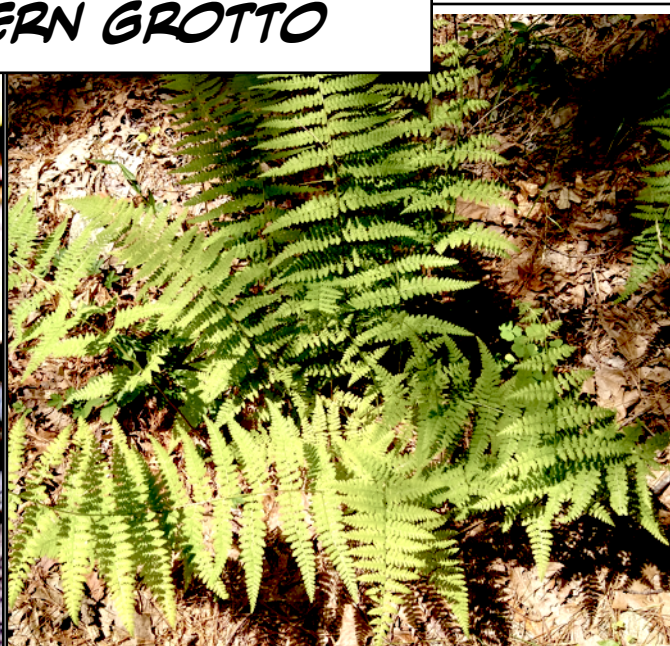
# HEADING FOR THE FERN GROTTO

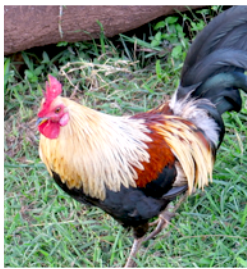


# HEADING FOR THE FERN GROTTO



# LEAVING THE FERN GROTTO





**WE HAD A GREAT TIME!**

